



Census Decision Center

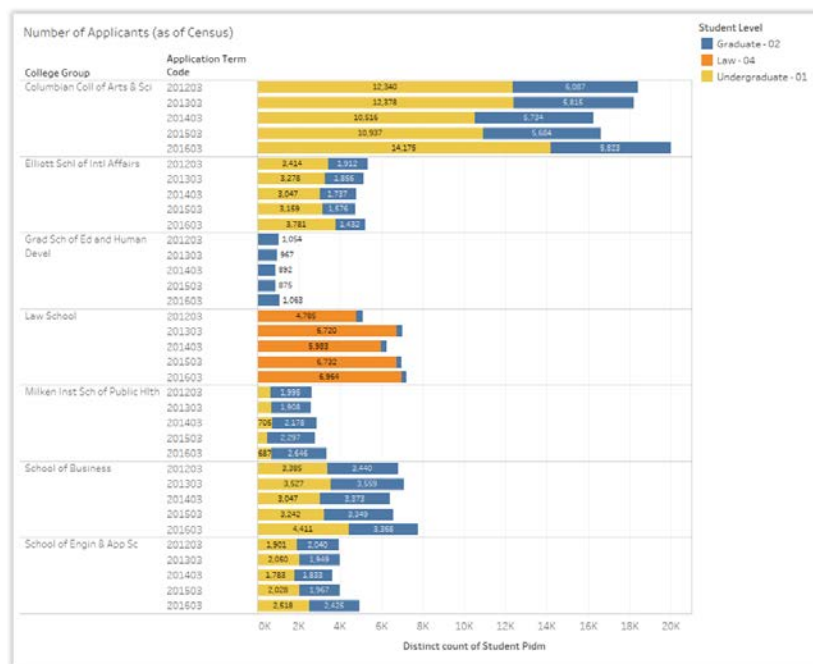
Product Vision

- For:* GW Decision Makers
- Who:* Desire a simple way to access, use, and understand Census Information
- The:* Census Decision Center
- Is an:* Integrated source of Census data
- That:* provides easy to use information that spans multiple years and can be consumed in multiple ways (Reports, Ad hoc queries, Dashboards, etc...)
- Unlike:* Distributed Census reports
- This Product:* Will be easy to use, visual, automatically updated, secured, and certified

New Products:

Census data is data that is captured at a certain pre-determined date in a term and is used for reporting to external agencies. It is also used internally at GW for planning and budgeting purposes. Data for this project from the last five academic years is being provided by the Office of Institutional Research. In the next phase of this project, the data will be pulled directly from source systems.

- **Census Application [BETA]** – Contains applications as of census date.



- **Census Student Registration [BETA]** (released into BETA in Release 11, shows student registration taken at the beginning and end of a term) – Improvements were made to the underlying data model in this Release to make better use of shared dimensions between Application and Student Registration.

Availability:

- The BETA version is available to a select group of users in the Office of Institutional Research and Enrollment Management.





ThoughtSpot Implementation

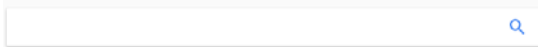


Product Vision

- For:* GW Faculty and Staff
- Who:* Need to quickly answer questions using data from the University Data Warehouse
- The:* Plan to bring ThoughtSpot into the BI environment
- Is an:* Implementation of a key word search based BI tool
- That:* Will allow customers to answer question in a self-service format
- Unlike:* Our other BI tools (Cognos, Tableau, Linkurious) that need reports/dashboards custom made for users
- This Product:* Does not require BIS intervention to meet the customer's needs.

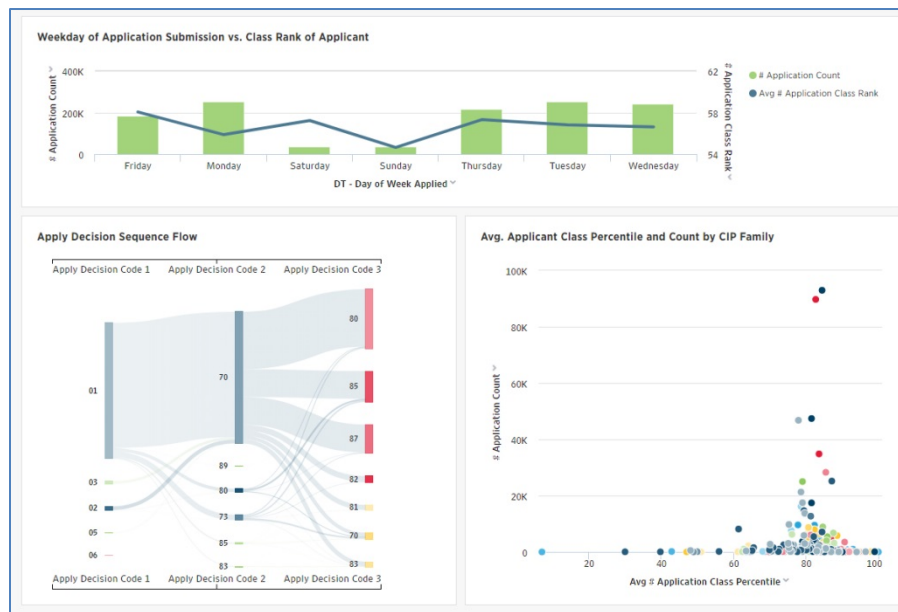
ThoughtSpot is a new tool that has been added to the Business Intelligence (BI) environment. It will provide search-based * BI capability to GW users, reducing time-to-insight for many ad hoc data needs.

* think Google



Upgrade to Version 4.4

- o Enhancements to search experience (more clarity/ease of use around how TS parses your entry into search "tokens")
- o Additional visualization options including Sankey, scatter plots with trend lines, better style customization, and more flexibility in the layout of Pinboards.
- o Migration from Ubuntu to CentOS for improved security and performance.
- o SpotIQ feature can analyze a dataset (or worksheet) and automatically generate insights -- it learns from specific feedback about which are useful and which are not, as well as from the search behavior of users across the system.



Sample visualizations in ThoughtSpot 4.4

Read more about ThoughtSpot and the upgrade to Version 4.4: <https://www.thoughtspot.com/thoughtspot-blog/5-amazing-new-additions-thoughtspot-44>





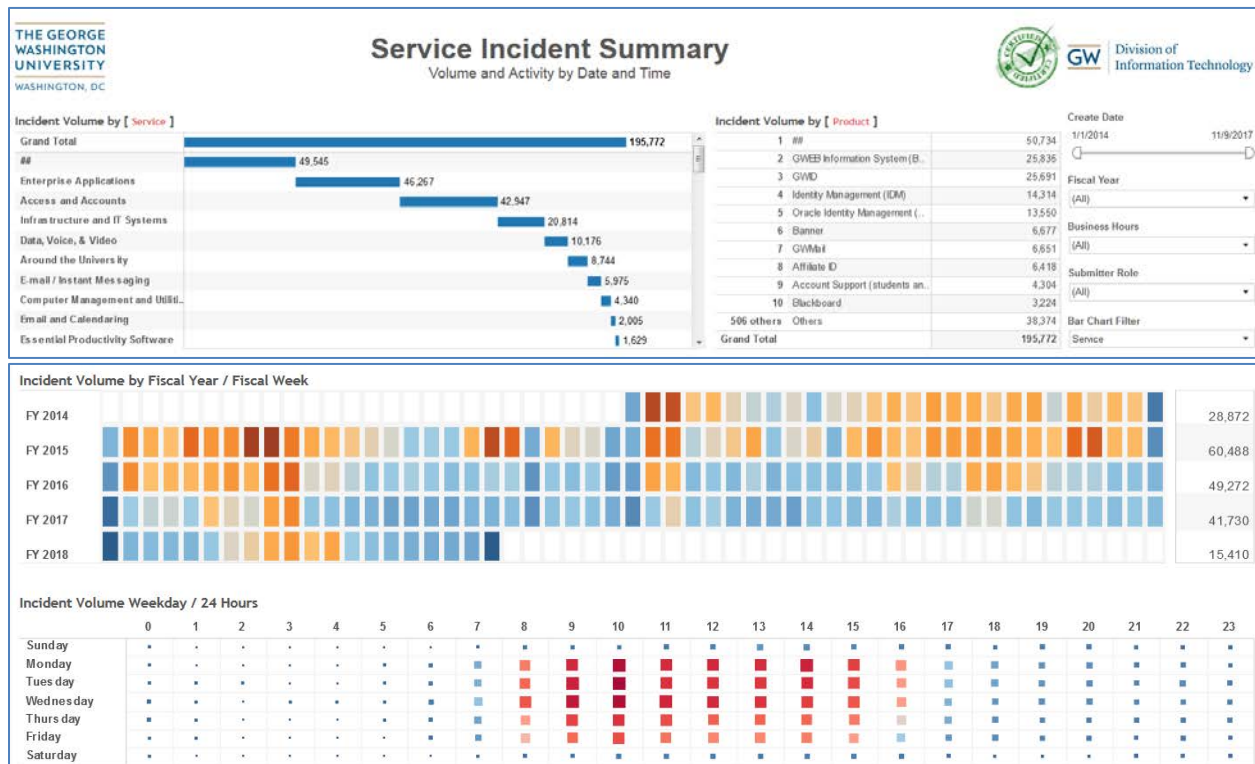
DIT Operations Dashboard

Product Vision

- For:* GW's **Division of IT Managers and Directors**
- Who:* *Would like to manage resources based upon well-defined and available metrics*
- The:* *DIT Operations Dashboard*
- Is an:* *Interactive and visualization tool*
- That:* *Provides key information and metrics*
- Unlike:* *Compiling data from different sources and merging them together in spreadsheets*
- This Product:* *Can be accessed online or on mobile devices, is secure, and pulls data from the data warehouse*

Modifications to Features:

- **Helpdesk Dashboard** – Helpdesk data was brought into the warehouse from the Remedy system to help analyze the impact of help desk service, assignment, impact, support, urgency, help desk problem and help desk resolution. A Service Incident Summary tab has been added to allow for the analysis by service, product, submitter role, volume by week, volume by day, etc.



Service Incident Summary tab on the DIT Help Desk Dashboard

Availability:

- Accessible to authorized users in the Division of IT: [DIT Help Desk](#)





Human Resources Decision Center

Product Vision

- For:* GW HR Decision Makers
Who: Desire a simple way to access, use, and understand Human Resources Information
The: HR Decision Center
Is an: Integrated source of Human Resources data
That: Provides easy to use information that spans multiple years and can be consumed in multiple ways (Reports, Cubes, Dashboards, etc...)
Unlike: SQL reports and manual spreadsheets
This Product: Will be easy to use, visual, automatically updated, secured, and certified

Added Features:

- **Payroll Labor Distribution Report** – lists employees' pay per period
 - Changes to the underlying data model now allows users to analyze Labor Distribution data using the Banner Activity code and Banner index
 - Available in the data warehouse * and as a Tableau Published Data Source**
- **Position Budget Report** - Lists the positions in an org, the budget allocated for the position, as well as the incumbent employee in the position
 - Now available as a Tableau Published Data Source**
- **Non-Payroll Labor Distribution** - Brings in all pay date occurrences of non-Payroll data activity (eg. Retirement Plan Contributions, FICA Contributions, Health Insurance, etc.).
 - The following were added to Non-Payroll Labor Distribution: Applicable Gross Amount, Gross Amount, and Net Amount.
 - Available in the data warehouse*

Availability:

- * Accessible to authorized users in the data warehouse: gsource.gwu.edu
- ** Accessible to authorized power users with Tableau Desktop licenses





Student Lifecycle Decision Center

Modified Features:

- **Student Course Registration** – lists all courses taken by students by term
 - Student Fee Rate and Admission Term were added to the Student Course Registration package to allow users to see when the student was admitted and the rate code associated with the course

Business Intelligence Services (BIS) Strategic Initiatives

Tableau Upgrade:

- To avail of the latest features, Tableau Server has been upgraded from version 10.3 to 10.4.
- Desktop users with current licenses are advised to upgrade to [version 10.4](#) especially if the workbook will be published on the server.
- To find out what's new in Tableau 10.4, please visit Tableau's [website](#).

