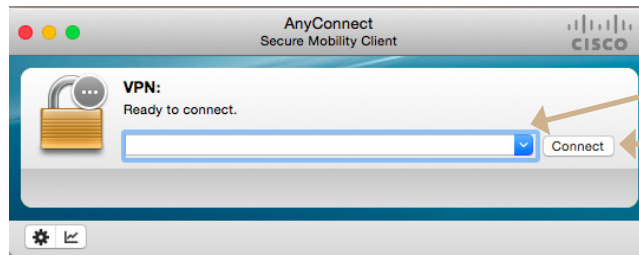


ACCESS VPN WITH DUO SECURITY

ACCESS VPN CLIENT

As before, access the Cisco AnyConnect VPN client on your desktop. Choose your VPN profile and click **Connect**. If you do not have the VPN client, please visit IT.GWU.EDU/vpn.



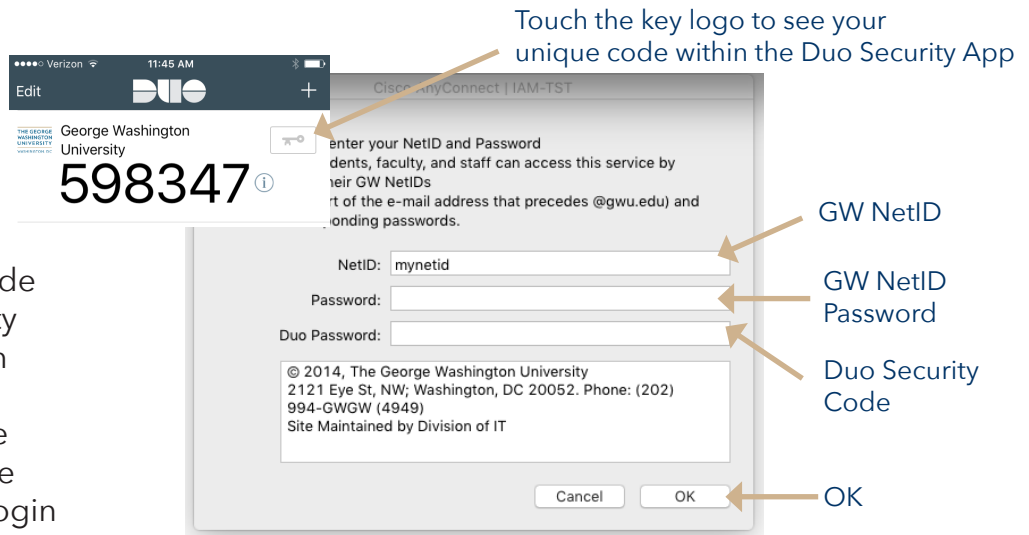
Select your VPN profile

Connect

CHOOSE A LOG IN OPTION

LOG IN WITH A CODE USING THE DUO SECURITY APP

Enter your GW NetID and corresponding password. In the **Duo Password** box, enter the code that appears in your Duo Security app. Log into the app, and touch the key logo next to the George Washington University. The code will appear. Enter this code in the Duo Password box on the VPN login screen.



Touch the key logo to see your unique code within the Duo Security App

GW NetID

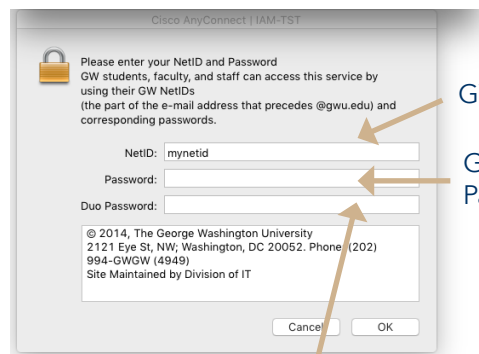
GW NetID Password

Duo Security Code

OK

LOG IN WITH A PUSH NOTIFICATION FROM THE DUO SECURITY APP

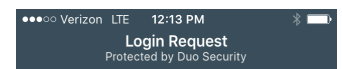
Enter your GW NetID and corresponding password. In the **Duo Password** box, enter the word "push". A notification will be sent to your phone. Open the notification and touch **Approve** to complete the log in process. Please note the Duo Security app must be installed on your device for this option.



GW NetID

GW NetID Password

When you enter the word "push" in the Duo Password field, a notification will be sent to your phone. Touch **Approve** to complete the log in process

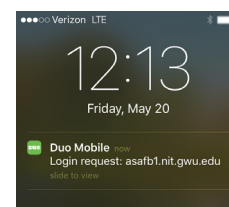


THE GEORGE WASHINGTON UNIVERSITY
WASHINGTON, DC

George Washington University
asafb1.nit.gwu.edu

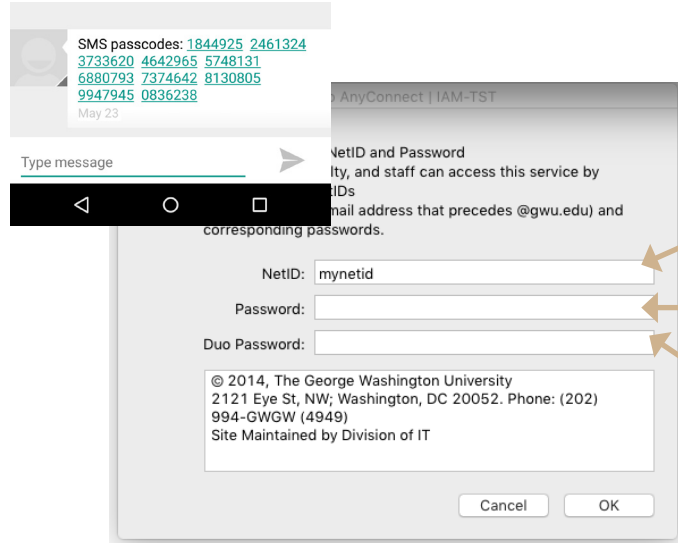


12:13:13 PM EDT
May 20, 2016



LOG IN WITH A CODE SENT VIA SMS TEXT

Enter your GW NetID and corresponding password. In the **Duo Password** box, enter the word "SMS". A number of codes will be sent to your registered device. You will be prompted again with the VPN log in screen on your computer. Enter your GW NetID and corresponding password, as well as one of the codes sent via text to your device. Please note the Division of IT incurs an additional fee with this option.



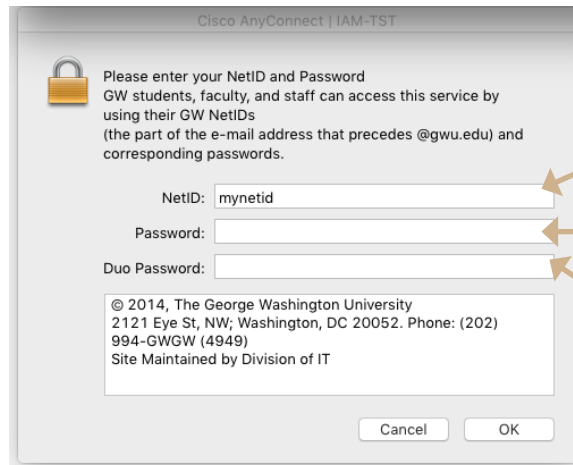
GW NetID

GW NetID Password

When you enter the word "SMS" in the Duo Password field, a notification with your unique access code will be sent to your registered device.

RECEIVE A PHONE CALL TO COMPLETE LOG IN

Enter your GW NetID and corresponding password. In the **Duo Password** box, enter the word "phone". You will receive a phone call from Duo Security to your registered device. Answer the call and press "1" to complete the log in process. Please note the Division of IT incurs an additional fee with this option.

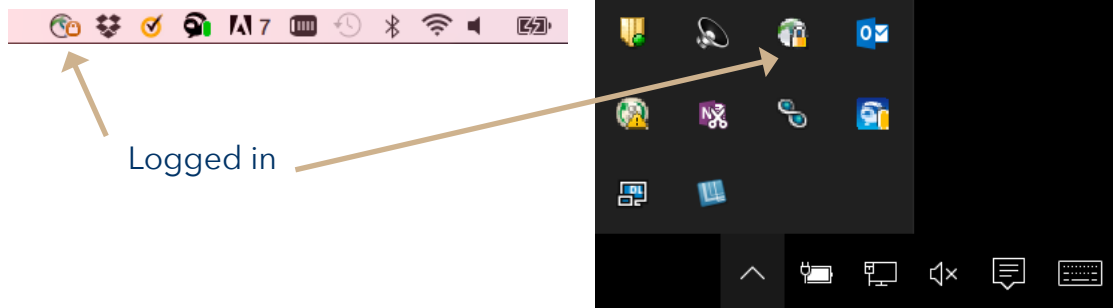


GW NetID

GW NetID Password

When you enter the word "phone" in the Duo Password field, you will receive a phone call from Duo Security. Please press "1" to complete the log in process.

VERIFY LOG IN



Logged in



TROUBLESHOOTING TIPS

If you receive one of the errors below, please follow these steps:

1. Check your Internet connection to ensure you have a valid network connection
2. Exit the Cisco AnyConnect VPN client
3. Reopen the Cisco AnyConnect VPN client
4. Retry VPN login

If you still receive an error message, please contact the IT Support Center at 202-994-4948 (GWIT) or ithelp@gwu.edu.

