



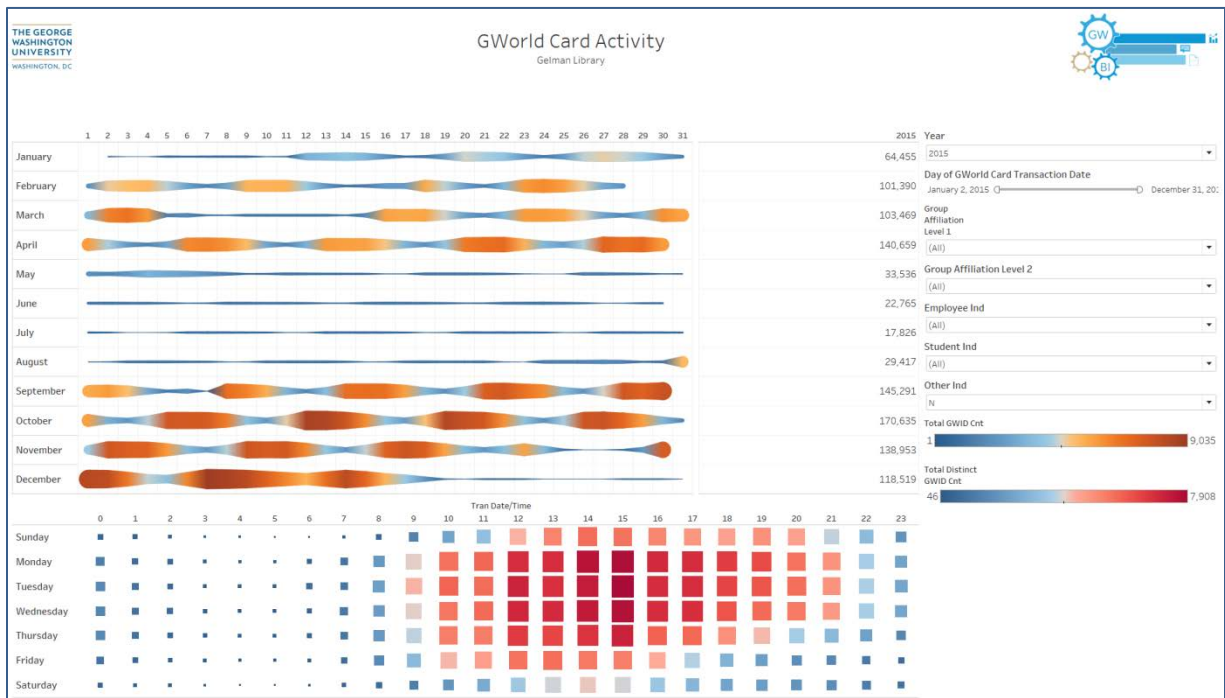
GWorld Decision Center

Product Vision

- For:* Library, Enrollment Management, and other GW Service Providers
- Who:* Desire a simple way to access, use, and understand Student Activity data
- The:* GWorld Decision Center
- Is:* Integrated source of Student Card Reader Activity data
- That:* Provides easy to use information that spans two years and can be consumed in multiple ways (Reports, Ad Hoc queries Dashboards, etc...)
- Unlike:* Spreadsheets emailed by the GWorld Office
- This Product:* Will be dimensional at the detail level, automatically updated, secured, and certified

New Products:

The **Library Service Management Dashboard** will be a collection of visualizations around Gelman Library activity collected via the GWorld Card system. Users will be able to see the affiliation of students, faculty and staff, the groups they belong to, as well as identify the dates and times that library's services are most/least utilized.



(sample screen shot)

Availability:

- The BETA version is available to a selected group within Gelman Library.





Financial Aid Decision Center

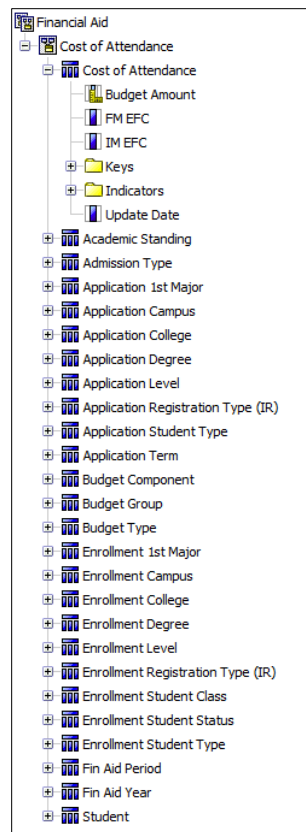
Product Vision

- For:* Enrollment Management, Financial Aid, and Schools
Who: Desire a simple way to access, use, and understand Financial Aid data
The: Financial Aid Decision Center
Is an: Integrated source of Financial Aid data
That: Provides easy to use information that spans multiple years and can be consumed in multiple ways (Reports, Ad Hoc queries Dashboards, etc...)
Unlike: SQR Reports
This Product: Will be dimensional at the detail level, automatically updated, secured, and certified

New Products:

The **Financial Aid Decision Center** is intended to be used by the Financial Aid Office and leaders at the University to gain insight into the data around grants, loans, scholarships, family contributions, unmet need, student debt, etc. The Financial Aid data that will be brought into the warehouse will also help inform discussions around enrollment and student retention.

- **Student Cost of Attendance**
 - The first fact table built for use on the Dashboard revolves around a student's cost of attending GW.



Availability:

- The BETA version is available to a select group of users in the Financial Aid Office.



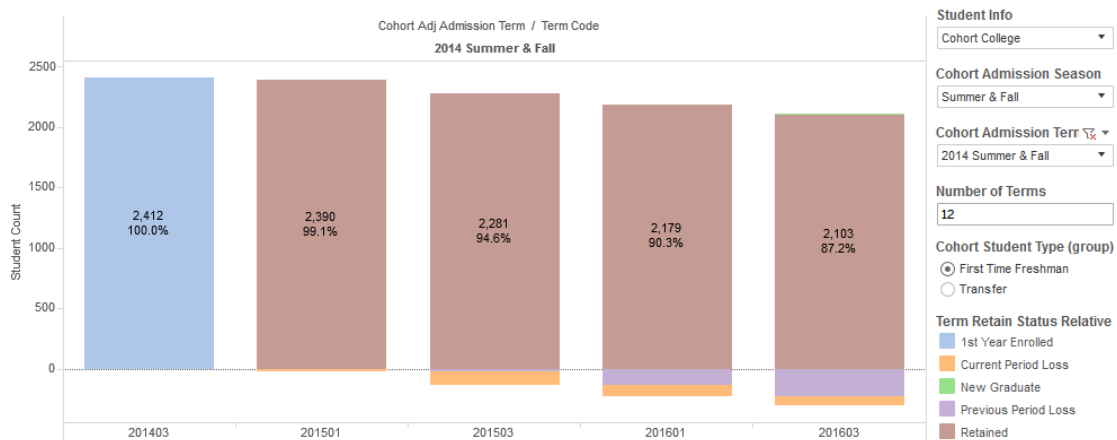


Enrollment Management Dashboard

Product Vision

- For:* Enrollment Decision Makers
- Who:* Would like to understand and access Enrollment information easily
- The:* Enrollment Management Dashboard
- Is an:* Interactive and visualization tool
- That:* Provides key information and metrics
- Unlike:* Compiling data from different sources and merging them together in spreadsheets
- This Product:* Can be accessed online or on mobile devices, is secure, and pulls data from the data warehouse

- **Removal of School-based security ***
 - At the request of users who need to see student data across different colleges (eg. student advisors who need to know who are transferring into their college), enrollment data stewards have approved the removal of school-based security from data warehouse reports. Unlike the previous security model where users can only see students in their college or students that their college is teaching, all users will now be able to see all students from other colleges, in all levels, and in all academic years.
- **Transfer Credit Fact table ***
 - The Transfer Credit fact table was built in order for advisors and Enrollment Management users to answer questions regarding courses transferred in by students from other higher education institutions.
- **Retention visualization [BETA] ****
 - To better understand how many undergraduate students in a cohort are retained over a 6-year period, the BIS team worked with Enrollment Management to understand how they define retention and apply those rules to each student's enrollment history. BIS then developed a series of visualizations that describe the year-over-year retention of a cohort with the capability of looking at the data by college, major, ethnicity, gender, campus, etc.



(sample screen shot)

Availability:

- * Accessible to authorized users in the data warehouse: gsource.gwu.edu
- ** Accessible to a select group of users within the Enrollment Management team.





Human Resources (HR) Decision Center

Product Vision

- For:* GW HR Decision Makers
- Who:* Desire a simple way to access, use, and understand Human Resources Information
- The:* HR Decision Center
- Is an:* Integrated source of Human Resources data
- That:* Provides easy to use information that spans multiple years and can be consumed in multiple ways (Reports, Cubes, Dashboards, etc...)
- Unlike:* SQL reports and manual spreadsheets
- This Product:* Will be easy to use, visual, automatically updated, secured, and certified

New Product:

- **People Dashboard [BETA]**
 - o Using data from the Human Resources Decision Center, the People Dashboard shows high-level metrics around employees like demographics, salary distributions, salary trends, performance evaluations. The dashboard is intended to be used by University leaders.

		0 - 4	5 - 9	10 - 14	15 - 19	20 - 24	25 - 29	30 and Above	Grand Total
Staff	Millennial Generation (< 36)	1,285	192	31	5				1,513
	Generation X (Ages 36 - 51)	462	269	188	103	34	26	2	1,084
	Baby Boomer Generation (Ages 52-70)	179	151	135	105	66	80	96	812
	Silent Generation (Ages 71 - 88)	1	3	6	2		1	7	20
Faculty	Millennial Generation (< 36)	102	21						123
	Generation X (Ages 36 - 51)	256	201	119	62	8	1		647
	Baby Boomer Generation (Ages 52-70)	133	110	75	91	87	72	82	650
	Silent Generation (Ages 71 - 88)	10	8	7	14	7	10	57	113
Research	Millennial Generation (< 36)	221	16	1					238
	Generation X (Ages 36 - 51)	89	16	14	3	2			124
	Baby Boomer Generation (Ages 52-70)	23	7	8	4	4	4	1	51
	Silent Generation (Ages 71 - 88)		1			1		2	4
Grand Total		2,756	989	579	385	205	190	244	5,348

(sample screen shot)

Availability:

- The BETA version is available to a select group of users in HR and EVP&T.





Advancement Decision Center

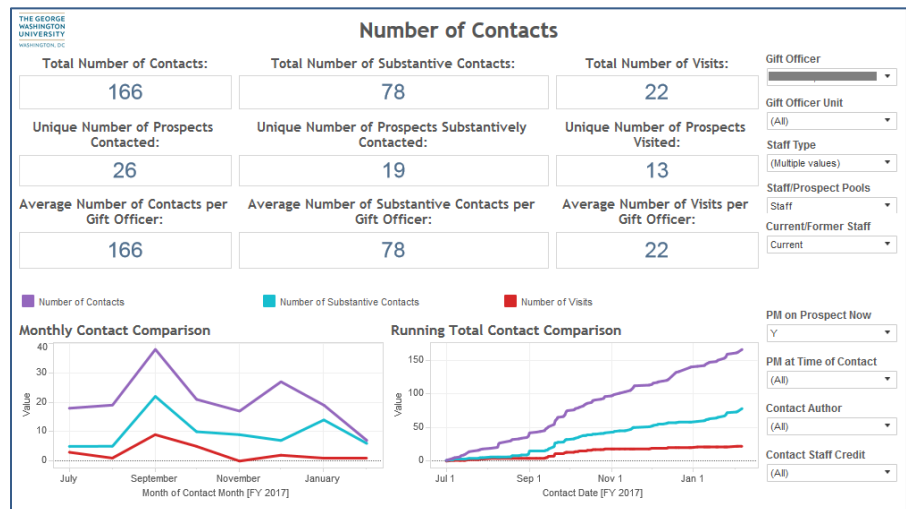
Product Vision

- For:* GW Development and Alumni Relations Decision Makers
- Who:* Desire a simple way to access, use, and understand Advancement Information
- The:* Advancement Decision Center
- Is an:* Integrated source of Advancement data
- That:* Provides easy to use information that spans multiple years and can be consumed in multiple ways
- Unlike:* Cognos reporting from Ellucian Advance
- This Product:* Will be integrated with other GW ERP data, easy to use, visual, automatically updated, secured, and certified

New Features:

The **RRM Pipeline Health Dashboard** is an interactive tool that provides Development and Alumni Relations (DAR) staff with an intuitive format to analyze, report, and act on pipeline performance at micro and macro levels. Developed by the DAR Technical Services group using data from the Advancement Decision Center, the RRM Pipeline Health Dashboard is displayed in four contexts:

- **Prospect Overview** – Provides analysis of prospect counts, rating levels, giving histories, and new/disqualified prospects. This dashboard visualizes distributions of giving potential by school/unit, gift officer, and individual prospect.
- **Proposals** – Displays overview of active and historical proposals. This model compares proposal amounts against ratings and planned ask amounts to help determine whether gift officers are maximizing the donations possible from their respective prospects.
- **Stages** – Visualizes prospects’ movement through different stages in the prospect lifecycle. This model allows gift officers to identify prospects who may require a greater level of attention to proceed through the lifecycle.
- **Contact Reports** – Presents a comprehensive depiction of contacts between GW staff and prospects. This dashboard displays the frequency and recency at which gift officers make contacts, prospects missing an internal strategy, and gift officers who frequently assist other staff with contacts.



(sample screen shot)

Availability:

- Available through Ellucian Advance (requires authentication): [Ellucian Advance](#)





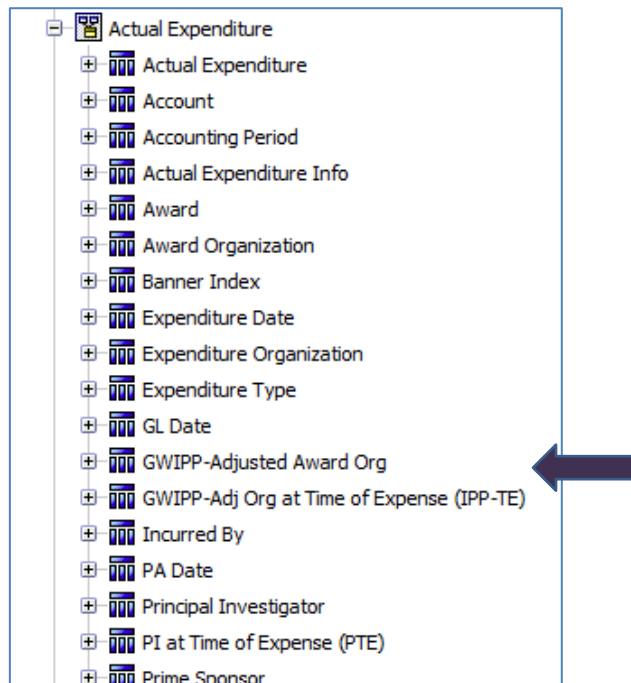
Principal Investigators (PI) Dashboard

Product Vision

- For:* Principal Investigators
Who: Would like to manage their awards
The: PI Dashboard
Is an: Interactive visualization tool
That: Provides key information and metrics
Unlike: Compiling data from different sources and merging them together in spreadsheets
This Product: Can be accessed online or on mobile devices, is secure, and pulls data from the data warehouse

Added Features:

- **GWIPP-Adjusted Award Org**
 - o In order to provide more accurate reporting for award expenditures and indirect costs, the Office of the VP for Research (OVPR) asked for all awards attributed to the GW Institute of Public Policy (GWIPP) to be attributed to the Principal Investigator's home organization.



Availability:

- Accessible to authorized users in the data warehouse: gsource.gwu.edu



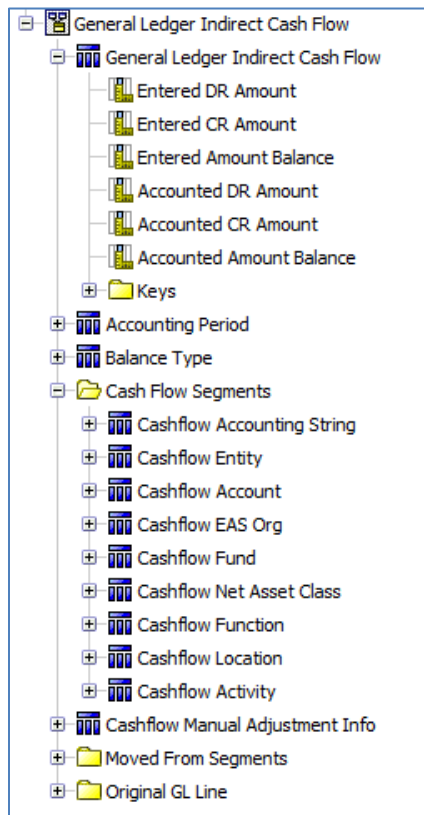
General Ledger (GL) Decision Center

Product Vision

- For:* GW Financial Decision Makers
Who: Desire a simple way to access, use, and understand General Ledger Information
The: General Ledger Decision Center
Is an: Integrated source of General Ledger data
That: Provides easy to use information that spans multiple years and can be consumed in multiple ways (Reports, Cubes, Dashboards, etc...)
Unlike: The GL-329 Cube
This Product: Will be dimensional at the detail level, automatically updated, secured, and certified

New Features:

- **GL Indirect Cash Flow Fact Table**
 - This new data source in the GL Decision Center was custom built for power users in Finance to create the Consolidated Statements of Cash Flows using indirect method which breaks down cash activities between cash flow from operating activities, cash flow from investing activities and cash flows from financing activities sections and by line items within each section.



Availability:

- Available for authorized users in Finance: gsource.gwu.edu





Pre-Award Decision Center

Product Vision

- For:* Principal Investigators, Office of VP for Research (OVPR) and Schools
Who: Desire a simple way to access, use, and understand Proposal/Pre-Award data
The: Pre-Award Decision Center
Is an: Integrated source of Proposal/Pre-Award data
That: Provides easy to use information that spans multiple years and can be consumed in multiple ways (Reports, Ad Hoc queries Dashboards, etc...)
Unlike: Manual requests for updates
This Product: Will be dimensional at the detail level, automatically updated, secured, and certified

New Products:

The **Pre-Award Decision Center** will be an extension of the Principal Investigator's Dashboard where users will be able to view the status of award proposals submitted to different funding agencies. Users will also be able to stay informed about an award's setup status.

Availability:

- The BETA version is available to a select group within the Office of the Vice President for Research.





Business Intelligence Services (BIS) Strategic Initiatives

Tableau Upgrade:

- To avail of the latest features, Tableau Server has been upgraded from version 9.2 to 10.1. Desktop users with current licenses are advised to upgrade to version 10.1.4 especially if the workbook will be published on the server.
- To find out what's new in Tableau 10.1, please visit Tableau's [website](#).

