



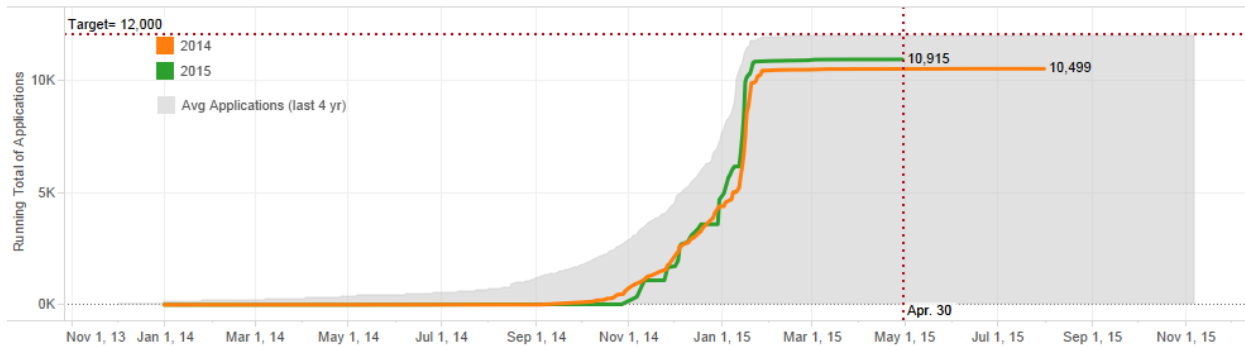
## Enrollment Management Dashboard

### Product Vision

- For:* Enrollment Decision Makers
- Who:* Would like to understand an access Enrollment information easily
- The:* Enrollment Management Dashboard
- Is an:* Interactive and visualization tool
- That:* Provides key information and metrics
- Unlike:* Compiling data from different sources and merging them together in spreadsheets
- This Product:* Can be accessed online or on mobile devices, is secure, and pulls data from the data warehouse

### 1. Application Dashboard

- o This visualization shows enrollment decision makers the status of applications as of a date they select. The count of applications is then compared against three historical numbers: applications from the previous year, the average number of applications for the last 4 years, and a target. Users can then assess whether applications are above or below target. They will also be able to see the year-over-year growth over 5 years.



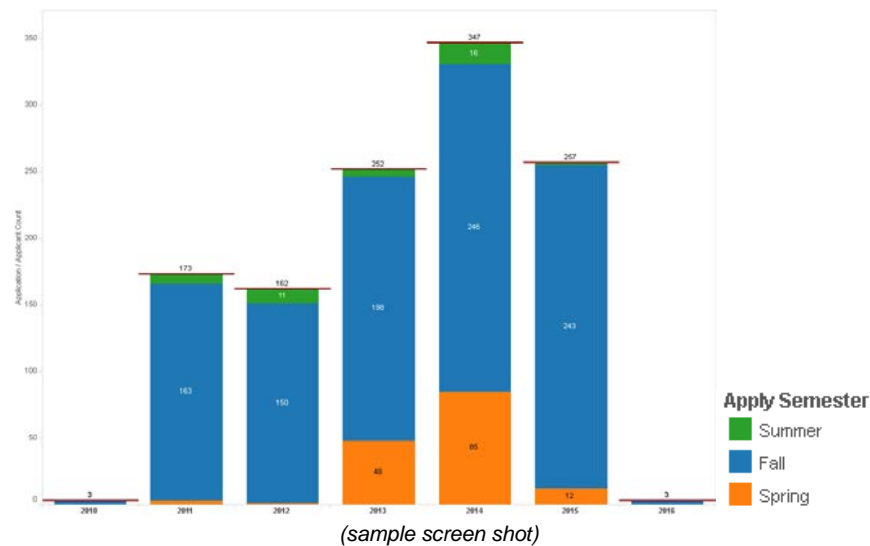
### Additional features:

**Application Details** – provides the detail behind the Application dashboard. Lists the number of applications/applicants by student level, college, major, degree, admission type, student type, gender, ethnicity

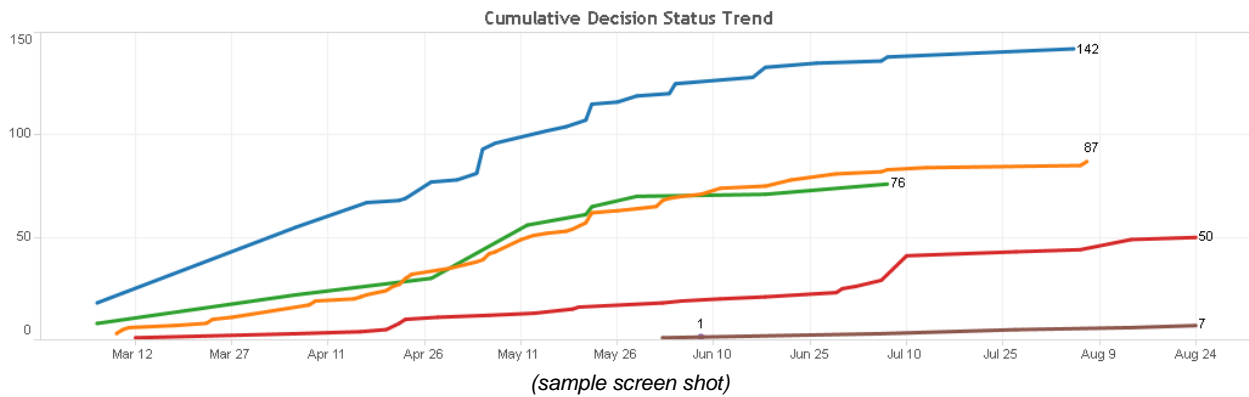
Student L.	College	Major	Degree	Admission Type	2010 Fall	2011 Fall	2012 Fall	2013 Fall	2014 Fall	2015 Fall
Graduate - 02	SON	Family Nurse Practitioner - 987	Doctor of Nursing Pra..	New Applicant	0	0	0	6	23	41
			M S in Nursing - 130	External Transfer	0	1	6	0	0	0
				Internal Transfer	0	3	4	0	0	0
				New Applicant	2	131	117	178	202	181
			Post-Master's Certificate - 116	External Transfer	0	0	1	0	0	0
				Internal Transfer	1	1	1	0	0	0
				New Applicant	0	27	21	14	21	21
<b>Total</b>					3	163	150	198	246	243
<b>Grand Total</b>					3	163	150	198	246	243

(sample screen shot)

**Count by Year** – count of applications/applicants by academic year



**Cumulative Decision Status Year-over-Year Growth** – Visually breaks down the status of applications by date so users can compare how many have been admitted, coming, denied, etc.



Users have the ability to interact with the visualization using a number of different filters:

- Option to count by number of applications or by the number of applicants
- Ability to pick a term of interest (eg. 201503, 201601, etc)
- Specify an “Applications as of” date
- Specify a target number of applications or applicants.
- Select College/s, Degree/s, Major/s, Student Level/s, Student Type/s, Admission Type/s, Gender, Ethnicity, Application Location/s, Campus/es



**Diversity of Admitted Students** – Shows the Gender and Ethnicity composition of Applicants by admission status (Applied, Admitted and Coming). It also shows the percentage increase or decrease over the previous year's term.

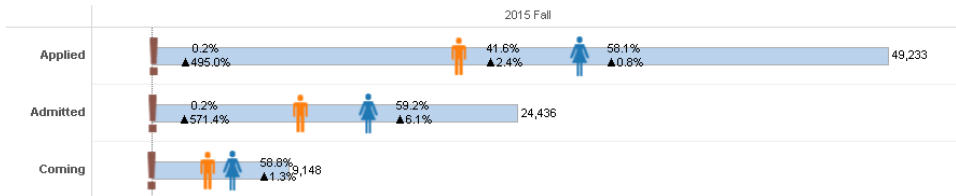


**Admission Diversity Dashboard**

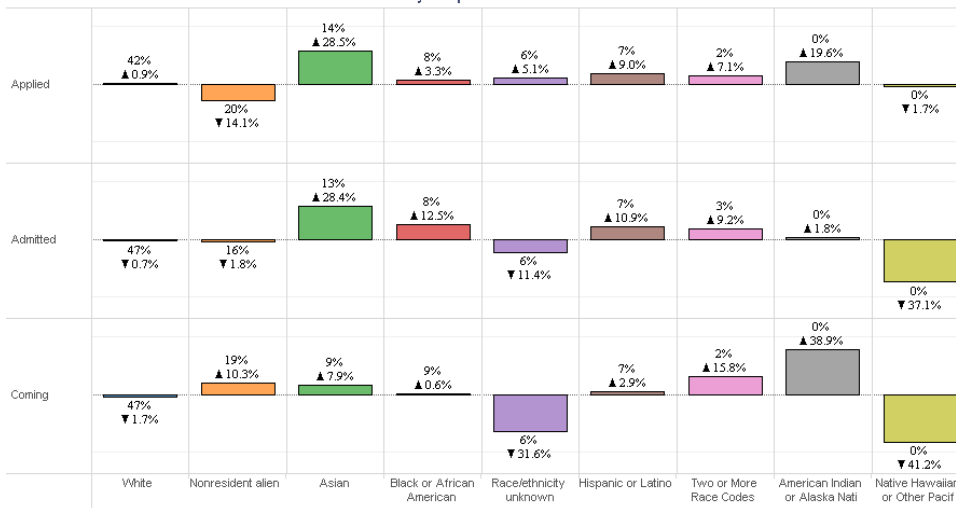
Data refreshed on  
9/25/2015 4:20:45 AM

Student Gender Composition for College: All, Level: All,  
 Ethnicity: All

Please click on the icon of gender to see the detail for each gender, or click on the bar to see the detail for each ethnicity



**Ethnicity Composition for Gender: All**



- Ethnicity**
- White
  - Nonresident alien
  - Asian
  - Black or African American
  - Race/ethnicity unknown
  - Hispanic or Latino
  - Two or More Race Codes
  - American Indian or Alaska Nati
  - Native Hawaiian or Other Pacif

(sample screen shot)

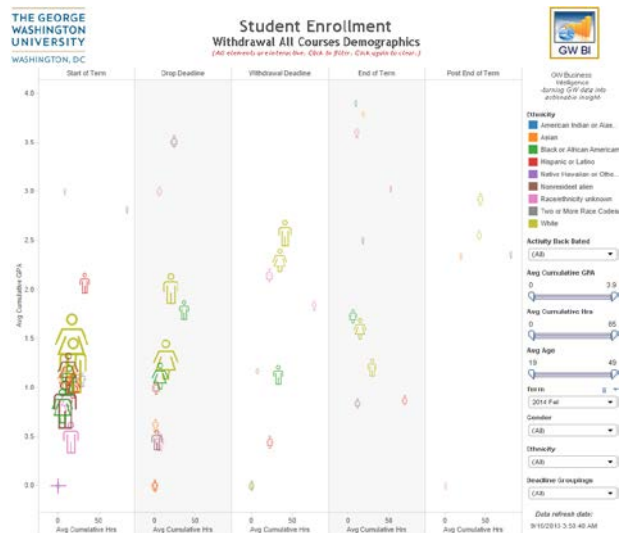
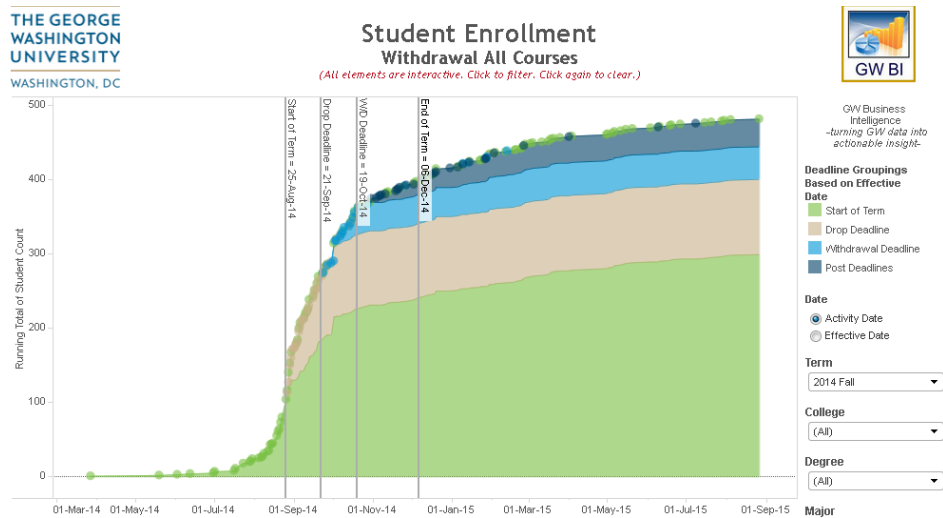
**Availability:**

- Available for authorized users in Enrollment Management: [Enrollment Management Dashboard](#).



## 2. Withdrawal All Courses [BETA]

- This visualization, developed for the Registrar's Office, shows the number of students who dropped ALL courses, when it occurred (Activity Date) and when it took effect (Effective Date). These dates are then plotted against the start of term, the drop deadline, the withdrawal deadline, and the end of term.
- These visualizations show the effect of back-dating course withdrawals (i.e., giving students full refunds even after drop deadline). The demographics visualization (bottom) shows the GPA profile of students who are dropping all courses.
- It can be filtered by term, college, degree, major, student level, student type, student campus



### Availability:

The **BETA** version is available for authorized users in Enrollment Management: [Student Enrollment – Withdrawal All Courses](#)



### 3. Admission Checklist

- Developed for Admissions, the Admission Checklist package allows users to view what requirements have been submitted by an applicant in addition to the applicant's High School, counselor and the application status.

Student ID (Full)	Apply Term Code	Application Status Desc	Checklist ADMR Code.△	ADMR Description	Comment	Institution Code	Institution Desc
G36228334	201503	Decision made	0001	High School Transcript	Paul D Schreiber Senior High	334605	Paul D Schreiber Senior High
G36228334	201503	Decision made	0002	College Transcript			
G36228334	201503	Decision made	0040	SAT and/or ACT scores	Test Date 01-MAR-2007		
G36228334	201503	Decision made	0201	Common Application Supplement			

*(sample screen shot)*

#### Availability:

- Available for authorized users in Undergraduate Admissions: [gsource.gwu.edu](http://gsource.gwu.edu)



**Principal Investigators (PI) Dashboard**  
 Release 6

**Product Vision**

- For: Principal Investigators
- Who: Would like to manage their awards
- The: PI Dashboard
- Is an: Interactive visualization tool
- That: Provides key information and metrics
- Unlike: Compiling data from different sources and merging them together in spreadsheets
- This Product: Can be accessed online or on mobile devices, is secure, and pulls data from the data warehouse

**Added Features:**

- **Expenditures in Suspense**
  - In the Summary and Detail report, a new column has been added for expenditures in suspense. This is to help monitor expenditures that have been charged to a suspense account **that have not been cleared.**

		Budget Amount	Period Actual *	Cumulative Actual *	Cumulative Encumbrance	Balance (Deficit)	Spending Level	In Funds Failed	In Suspense Account/s
Direct Cost	COMPENSATION	5,259.00	1,000.00	1,000.00	0.00	4,259.00	19.02%	0.00	0.00
	FRINGE BENEFITS EXPENSE	1,047.00	65.00	65.00	0.00	982.00	6.21%	0.00	0.00
	MISCELLANEOUS OPERATING	0.00	3.00	3.00	0.00	(3.00)	-	0.00	0.00
	PROGRAM DEVELOPMENT ACTIVITY	0.00	1,330.80	1,330.80	0.00	(1,330.80)	-	0.00	0.00
	STUDENT SUPPORT	20,052.00	20,020.00	20,020.00	0.00	32.00	99.84%	0.00	20,020.00
	SUPPLIES	350.00	0.00	0.00	0.00	350.00	0.00%	0.00	0.00
	TRAVEL-DOMESTIC	16,550.00	119.27	119.27	0.00	16,430.73	0.72%	0.00	0.00
	<b>Total</b>	<b>43,258.00</b>	<b>22,538.07</b>	<b>22,538.07</b>	<b>0.00</b>	<b>20,719.93</b>	<b>52.10%</b>	<b>0.00</b>	<b>20,020.00</b>
Indirect Cost	INDIRECT COSTS	0.00	0.00	0.00	0.00	0.00	-	0.00	0.00
	<b>Total</b>	<b>0.00</b>	<b>0.00</b>	<b>0.00</b>	<b>0.00</b>	<b>0.00</b>	<b>0</b>	<b>0.00</b>	<b>0.00</b>
<b>Total</b>		<b>43,258.00</b>	<b>22,538.07</b>	<b>22,538.07</b>	<b>0.00</b>	<b>20,719.93</b>	<b>52.10%</b>	<b>0.00</b>	<b>20,020.00</b>

- Clicking on the link will open a new window that shows the details of the expenditures in suspense.

		Budget Amount	Period Actual *	Cumulative Actual *	Cumulative Encumbrance	Balance (Deficit)	Spending Level	In Funds Failed	In Suspense Account/s
Direct Cost	COMPENSATION	5,259.00	1,000.00	1,000.00	0.00	4,259.00	19.02%	0.00	0.00
	FRINGE BENEFITS EXPENSE	1,047.00	65.00	65.00	0.00	982.00	6.21%	0.00	0.00
	MISCELLANEOUS OPERATING	0.00	3.00	3.00	0.00	(3.00)	-	0.00	0.00
	PROGRAM DEVELOPMENT ACTIVITY	0.00	1,330.80	1,330.80	0.00	(1,330.80)	-	0.00	0.00
	STUDENT SUPPORT	20,052.00	20,020.00	20,020.00	0.00	32.00	99.84%	0.00	20,020.00

- **Alerts**
  - Alerts for Failed Funds and Expenditures in Suspense have been added to the Notification/s space.

Data refreshed on: Sep 14, 2015 6:29:12 AM

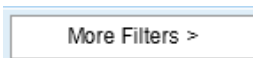
ling Source	Budget Amount	Total Expenditures to date	Encumbrance Amount	Balance (Deficit)	Notification/s
ELESCOPE INSTITUTE	12,514.00	0.00	0.00	12,514.00	With Funds Failed



ing Source	Budget Amount	Total Expenditures to date	Encumbrance Amount	Balance (Deficit)	Notification/s
RTMENT OF E	43,258.00	22,538.07	0.00	20,719.93	Award ends in 14 day/s, Expenditures in Suspense

• **Additional Prompts**

- o The following prompts have been added to help search for specific awards: Award Start Date, Award Orgs and Funding Sources.



(More Filters button can be found at the bottom of the Summary and Detail report prompt page)

**Award Summary**  
Prompt Page  
 Release 6

Select Awards with Start Date (mm/dd/yyyy) from (optional):

Select Award Org/s (optional):

813211 - MICROBIOLOGY IMMUNOLOGY & TROPICAL MEDICINE  
 870011 - SPHHS GENERAL CENTER  
 870031 - SPHHS RESEARCH ADMIN  
 872411 - EPIDEMIOLOGY BIOSTATISTICS

[Select all](#) [Deselect all](#)

Select Funding Source/s (optional):

COST SHARING  
 DC GOVERNMENT - DEPARTMENT OF HEALTH  
 ELIZABETH GLASER PEDIATRIC AIDS FOUNDATI  
 FHI DEVELOPMENT 360 LLC  
 HHS/NATIONAL INSTITUTES OF HEALTH-LOC

[Select all](#) [Deselect all](#)

Select Banner Index/es (optional):

830373  
 830377  
 830389  
 830393  
 836901  
 836902  
 836956  
 836957  
 836959  
 836960  
 836962

[Select all](#) [Deselect all](#)

**Availability:**

- Accessible through OVPR's website (Summary and Detail Reports): <http://research.gwu.edu/pi-dashboard>



**Human Resources (HR) Decision Center**

**Product Vision**

- For:* GW HR Decision Makers
- Who:* Desire a simple way to access, use, and understand Human Resources Information
- The:* HR Decision Center
- Is an:* Integrated source of Human Resources data
- That:* Provides easy to use information that spans multiple years and can be consumed in multiple ways (Reports, Cubes, Dashboards, etc...)
- Unlike:* SQL reports and manual spreadsheets
- This Product:* Will be easy to use, visual, automatically updated, secured, and certified

**Added security for Payroll Labor Distribution:**

In order to replace the payroll paper “blue reports” that list employees’ salaries per pay period, an extra layer of security was added to the HR Decision Center for Payroll Labor Distribution so that users can run the report from the data warehouse. This saves the University thousands of dollars in printing and distribution costs. The reports, developed by the Human Resources Information Services team (HRIS) and certified by Payroll Services, went into Production on July 1, 2015.

**Note: In addition to having access to the right Employee Classes and Orgs, users are also required to have access to the NBAJOBS form in Banner in order to get any data back in these reports.**

- **Payroll Labor Distribution Report**
  - Lists employees’ pay per period

Cost Center: (EAS Org Code - Banner Org Code - Fund Code - Account Code - Program Code)

GWid	Name	Payroll ID	Pay Calendar CHK_DT	Pay Calendar BEG_DT	Pay Calendar END_DT	Total Reg Hours	Total Reg Amount	Total Overtim
		2015-BW-19-0	09/11/2015	08/16/2015	08/29/2015	80		
- Total						80		
(EAS Org Code - Banner Org Code - Fund Code - Account Code - Program Code) - Total						80		
<b>Overall - Total</b>						<b>80</b>		

- **Position Budget Report**
  - Lists the positions in an org, the budget allocated for the position, as well as the incumbent employee in the position.

**Availability:**

- Accessible to authorized users in the data warehouse: [gsource.gwu.edu](http://gsource.gwu.edu)
- Reports can be found under the HRIS Reports > HR\_Finance folder





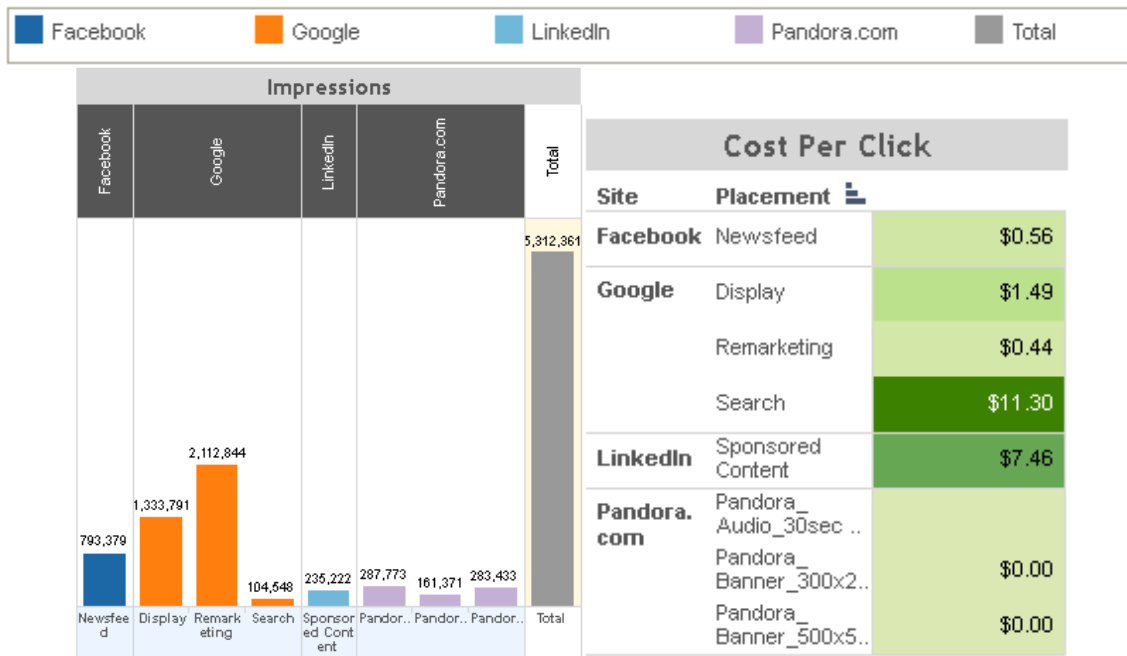
**Online Ad Effectiveness Dashboard**

**Product Vision**

- For:* GW's External Relations and School Marketing Teams
- Who:* Would like to manage online advertising
- The:* Online Ad Effectiveness Dashboard
- Is an:* Interactive and visualization tool
- That:* Provides key information and metrics
- Unlike:* Compiling data from different sources and merging them together in spreadsheets
- This Product:* Can be accessed online or on mobile devices, is secure, and pulls data from the data warehouse

**New Features:**

- **Media Dashboard** – Developed by GW's advertising vendor, LMO Advertising, the Media Dashboard is hosted on GW's Tableau Server and captures key metrics about the performance of ads placed by schools across different web platforms like LinkedIn, Facebook, Google, etc. The dashboard is secured by school and can be filtered according to campaign, site and placement. The dashboard is currently updated on a weekly basis. Metrics include:
  - Impressions
  - Clicks
  - Click Through Rate
  - Conversion Rate
  - Conversions
  - Spend
  - Cost Per Click
  - Cost Per Conversion



(sample screen shots)

**Availability:**

- Accessible to users authorized by External Relations: [Media Dashboard](#)



## GCAS Dashboard

### Product Vision

- For:* GW's **Grants and Contracts Accounting** Staff and Decision Makers  
*Who:* Would like to manage the awards accounting process  
*The:* GCAS Dashboard  
*Is an:* Interactive and visualization tool  
*That:* Provides key information and metrics  
*Unlike:* Compiling data from different sources/reports and merging them together in spreadsheets  
*This Product:* can be accessed online or on mobile devices, is secure, and pulls data from the data warehouse (primarily from PI Dashboard and GL Decision Center data)

### New Report:

- **Labor Detail Report [BETA]** – Developed for Finance's Grants and Accounting Services team, this report gives the payroll detail of employees working on grants and the percent of effort they spend on an award to verify salaries and wages associated with federally sponsored agreements. The report can be filtered on Posting Date, PICT Code, Project Number, Billing Group, and Award Number.

Last Name	First Name	P-T-A	Expenditure Comment	Posting Date	Earn Hours	Earn Rate	% Effort	Actual Amount
			Payroll-BW-6-A 13-mar-2015	03/31/2015	82.25	\$26.56	49.77%	\$2,184.56
			Payroll-BW-7-A 27-mar-2015	03/31/2015	83	\$26.56	50.23%	\$2,204.48
								\$4,389.04

### Availability:

- This **BETA** release will be made available to the Grants and Contracts Accounting Services team in the data warehouse: [gsources.gwu.edu](http://gsources.gwu.edu)



## DIT Operations Dashboard [BETA Release]

### Product Vision

- For:* **Division of IT Managers and Directors**  
*Who:* *Would like to manage resources based upon well-defined and available metrics*  
*The:* **DIT Operations Dashboard**  
*Is an:* *Interactive and visualization tool*  
*That:* *Provides key information and metrics*  
*Unlike:* *Compiling data from different sources and merging them together in spreadsheets*  
*This Product:* *Can be accessed online or on mobile devices, is secure, and pulls data from the data warehouse*

### New Features:

- **Change Management Dashboard** – Developed for the Division of IT, this dashboard uses data brought into the data warehouse from the Remedy system to help analyze the impact of changes to IT's infrastructure and of service disruptions to DIT's services.

### Support Organization Impact Assessment



### Impact



(sample screen shots)

### Availability:

- This **BETA** release will be accessible to authorized users in the Division of IT: [Change Management Dashboard](#)



---

## **Business Intelligence Services (BIS) Strategic Initiatives**

### **Tableau Server upgrade:**

- To avail of the latest features, Tableau Server has been upgraded from 8.3 to 9.1. Desktop users with current licenses are advised to upgrade to version 9.1 especially if the workbook will be published on the server.

### **Move to Virtual Linux servers:**

- As part of the Division of IT's SPARC/Solaris to Linux migration project, the data warehouse's servers were migrated to Virtual machines on September 25, 2015. The servers include those in the Development and Production environments. The project aims to reduce the environmental impact on GW Datacenters, streamline service delivery, improve resiliency, improve performance, and to replace aging systems that would be costly to replace or extend maintenance on.