



**Census Decision Center**

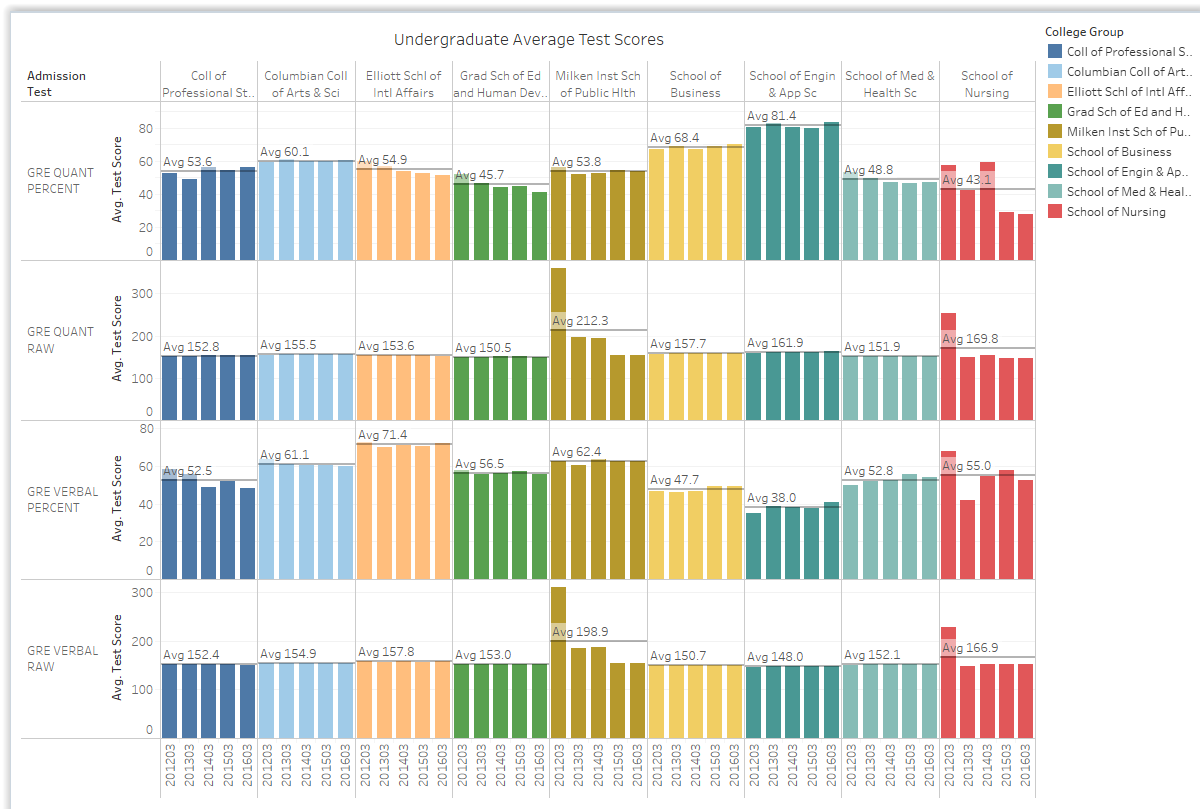
**Product Vision**

- For:* GW Decision Makers
- Who:* Desire a simple way to access, use, and understand Census Information
- The:* Census Decision Center
- Is an:* Integrated source of Census data
- That:* provides easy to use information that spans multiple years and can be consumed in multiple ways (Reports, Ad hoc queries, Dashboards, etc...)
- Unlike:* Distributed Census reports
- This Product:* Will be easy to use, visual, automatically updated, secured, and certified

**New Products:**

Census data is data that is captured at a certain pre-determined date in a term and is used for reporting to external agencies. It is also used internally at GW for planning and budgeting purposes. Data for this project from the last five academic years is being provided by the Office of Institutional Research & Planning. In the next phase of this project, the data will be pulled directly from source systems.

- **Census Test Scores [BETA]** – Contains submitted test scores of applicants as of census date.



**Availability:**

- The BETA version is available to a select group of users in the Office of Institutional Research & Planning and in Enrollment Management and Retention.





**ThoughtSpot Implementation**

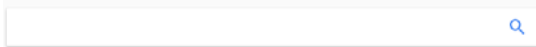


**Product Vision**

- For:* GW Faculty and Staff
- Who:* Need to quickly answer questions using data from the University Data Warehouse
- The:* Plan to bring ThoughtSpot into the BI environment
- Is an:* Implementation of a key word search based BI tool
- That:* Will allow customers to answer question in a self-service format
- Unlike:* Our other BI tools (Cognos, Tableau, Linkurious) that need reports/dashboards custom made for users
- This Product:* Does not require BIS intervention to meet the customer's needs.

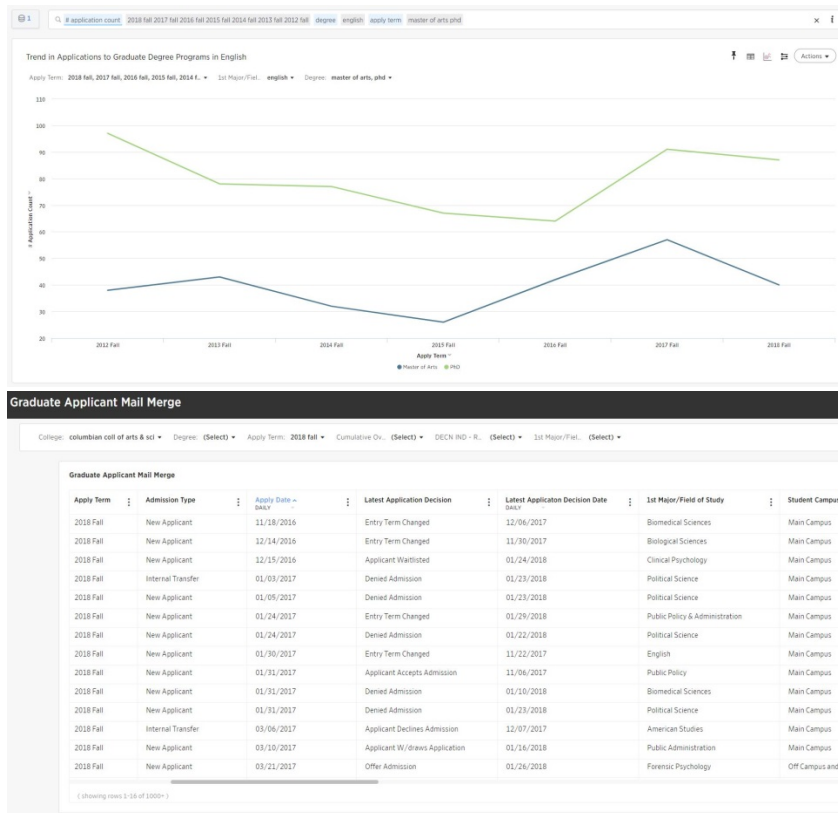
**ThoughtSpot** is a new tool that has been added to the Business Intelligence (BI) environment. It will provide search-based \* BI capability to GW users, reducing time-to-insight for many ad hoc data needs.

\* think Google



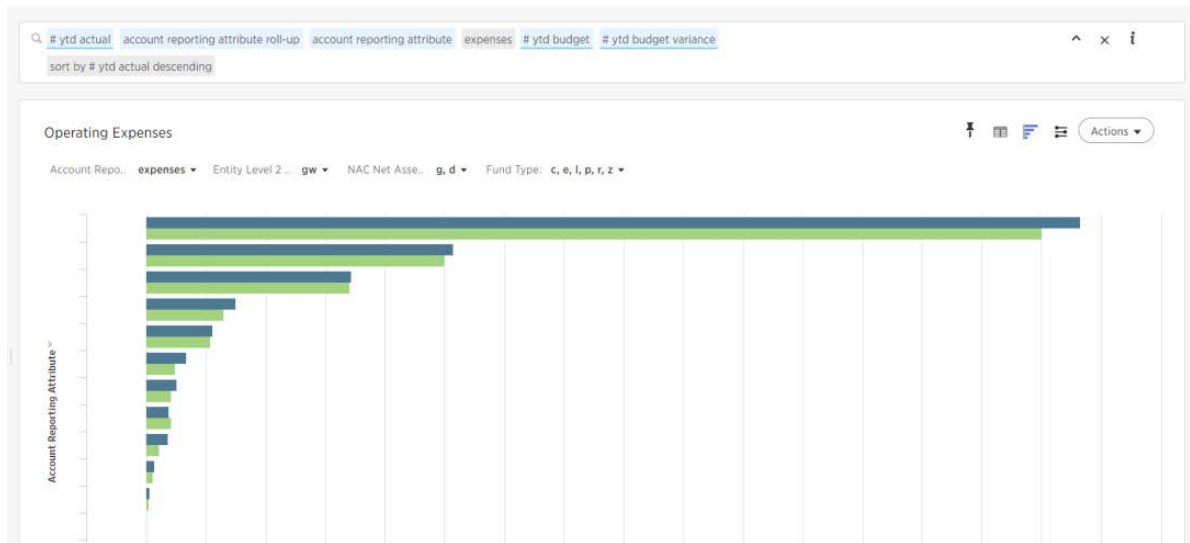
**New worksheets:**

- **Student Application Worksheet** includes information about applicants, the college, degree and program to which they have applied, as well as admissions decisions. It can be easily leveraged to examine trends in applications over time, retrieve student details for an incoming class, or examine patterns in admissions decisions related to, for example, an applicant's class rank or GPA.





- **General Ledger 2-Year Summary Worksheet** makes available General Ledger data from the current fiscal year as well as the prior fiscal year. Providing a variety of values such as Budgeted and Actual amounts and breakdowns by Org, Account Attribute, and Entity, this worksheet is designed to give quick, flexible access to Finance users to answer novel questions, quickly generate visualizations, and structure reports to suit their exact needs.



Sample of a search using ThoughtSpot (sensitive information removed)

Learn more about ThoughtSpot: <https://www.thoughtspot.com/>





## Student Lifecycle Decision Center

### New Features:

- Special Programs** – This data set is used by Undergraduate Admissions to store and analyze data relevant to a number of co-curricular programs as well as attributes for some special populations. Special programs include BAMD, Honors, Women's Leadership, SJT, POSSE.

Special Program Term Code	Special Program Desc	Special Program Decision	Student Count
201703	Seven Yr. Accelerated BA/MD	Admitted - 01	12
201703	Seven Yr. Accelerated BA/MD	Alternate - 30	5
201703	Seven Yr. Accelerated BA/MD	Application Withdrawn - 83	12
201703	Seven Yr. Accelerated BA/MD	Declines Program - 80	1
201703	Seven Yr. Accelerated BA/MD	Denied - 50	1,123
201703	SMPA Journalism	Admitted - 01	116
201703	SMPA Journalism	Application Withdrawn - 83	11
201703	SMPA Journalism	Denied - 50	184
201703	SMPA Political Communication	Admitted - 01	89
201703	SMPA Political Communication	Denied - 50	99
201703	Stephen Joel Trachtenberg Scholars	Admitted - 01	10
201703	Stephen Joel Trachtenberg Scholars	Denied - 50	14
201703	University Honors Program	### - ###	37
201703	University Honors Program	Accepts Alternate - 31	2
201703	University Honors Program	Accepts Program - 70	153
201703	University Honors Program	Admitted - 01	700
201703	University Honors Program	Application Withdrawn - 83	243
201703	University Honors Program	Declines Program - 80	52
201703	University Honors Program	Denied - 50	2,427
201703	University Honors Program	Referred to Program for Review - 91	3





**Business Intelligence Services (BIS) Strategic Initiatives**

**New Dashboards:**

A new set of interactive Tableau dashboards are being introduced to the most frequent users of the following subject areas: Course Registration, Student Enrollment and Award Management.

- **Class Roster Dashboard [BETA]** – Unlike a list report, this dashboard allows users to quickly find out who is enrolled for a course without having to repeatedly run reports. It also gives the distribution by student college, 1<sup>st</sup> major, student level and grade distribution.

**Class Roster**  
 Instructions: To view a class roster, use the filters then click on a Course.

Term Code: 201801 | Course College: (All) | Subject Code: (All) | Course Level: (All) | Instructor: (All) | CRN: (All)

Course College Group	Course Term Code	Course Section	Course	CRN	Course Level	Primary Instructor Last Name	Waitlist Count	Actual and Max Enrollment (Hover for more info)	Credit Hours Generated
ACA, Columbian Coll of Arts & Sci	201801	ACA 6202-10	Acting II	32543	Graduate	Wild	0	14	42
		ACA 6208-10	Topics:Classical Drama/Cult II	32544	Graduate	Jacobson	0	14	28
		ACA 6210-10	Text II	32545	Graduate	Wild	0	14	28
		ACA 6212-10	Voice and Speech II	32546	Graduate	Wild	0	13	28
		ACA 6216-10	Movement II	32547	Graduate	Wild	0	14	28
		ACA 6220-10	Alexander Technique II	32548	Graduate	Wild	0	14	28
		ACA 6224-10	Stage Combat II	32549	Graduate	Wild	0	13	26
		ACA 6228-10	Practicum IV	32550	Graduate	Wild	0	12	36
		ACA 6595-10	Selected Topics	33021	Graduate	Wild	0	13	12
ACCY, School of Business	201801	ACCY 2001-10	Intro to Financial Accounting	31233	Undergraduate	Rozenbaum	0	51 OVER 153	153
		ACCY 2001-11	Intro to Financial Accounting	30002	Undergraduate	Rozenbaum	0	51 OVER 153	153
		ACCY 2001-12	Intro to Financial Accounting	30953	Undergraduate	Rozenbaum	0	51 OVER 153	153
		ACCY 2001-13	Intro to Financial Accounting	34488	Undergraduate	Moon	0	50 PULL 150	150
		ACCY 2002-10	Intro Managerial Accounting	30003	Undergraduate	Linsley	0	35 105	105
		ACCY 2002-11	Intro Managerial Accounting	30004	Undergraduate	Lancaster	0	45 135	135
		ACCY 2002-12	Intro Managerial Accounting	30005	Undergraduate	Tan	0	47 141	141

Roster for [CRN 31233] ACCY 2001-10 - Intro to Financial Accounting, 2018 Spring

Register Ter... Student College... Degree | 1st Major Desc/Field of Study | Full Name | GWID | Registration Type... Student Clas... GW E-Mail Address | Grade

Student College Distribution (click to filter)	Student 1st Major Distribution (click to filter)	Student Level Distribution (click to filter)	Grade Distribution (click to filter)
Columbian Coll of Arts & Sci: 15	Accountancy: 1	Undergraduate: 51	51
Elliott Schl of Intl Affairs: 4	Arts & Sciences: 12		
Milken Inst Sch of Public Hlth: 1	Business Econ & Public Policy: 2		
School of Business: 29	Economics: 1		
School of Engin & App Sc: 2	Exercise Science: 1		
	Finance: 1		

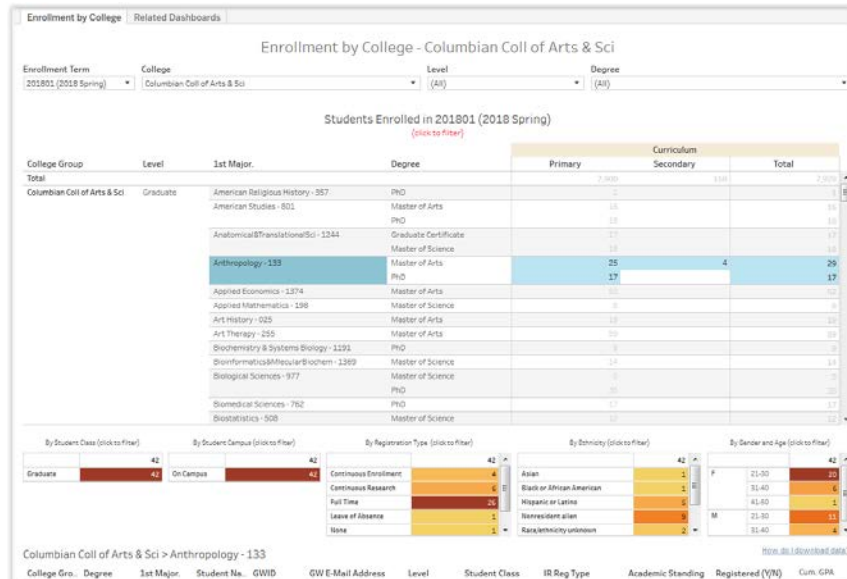
**Availability:**

- The BETA version is available to a select group of users from the different schools across the University.

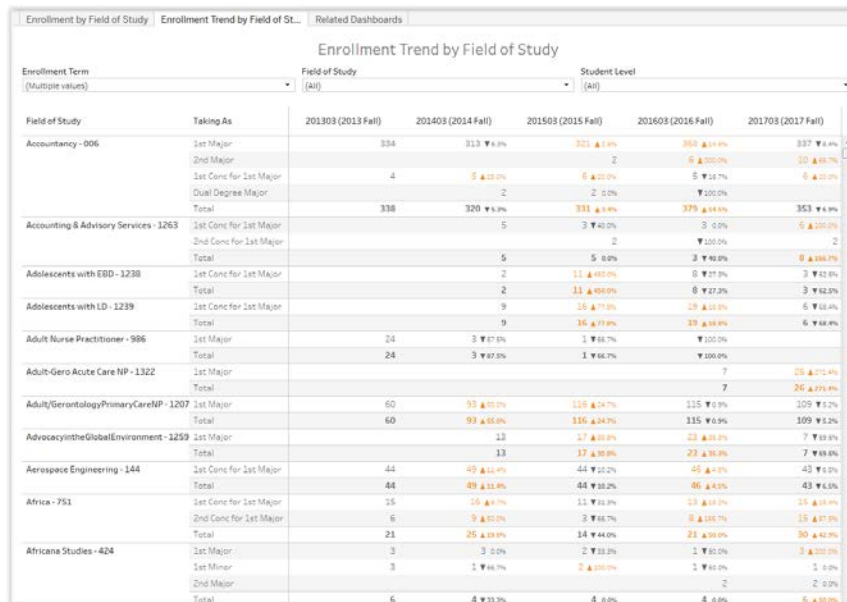




- **Student Enrollment by College Dashboard [BETA]** – This dashboard allows users to determine enrollment counts for primary and secondary curriculums and break down those counts by student class, student campus, registration type, ethnicity, gender and age.



- **Student Enrollment by Field of Study Dashboard [BETA]** – Instead of counting students enrolled by college, this dashboard counts students by their field of study. Users will be able to see students taking a field of study regardless of whether it is taken as a major, minor or concentration. Year-over-year enrollment is also provided.



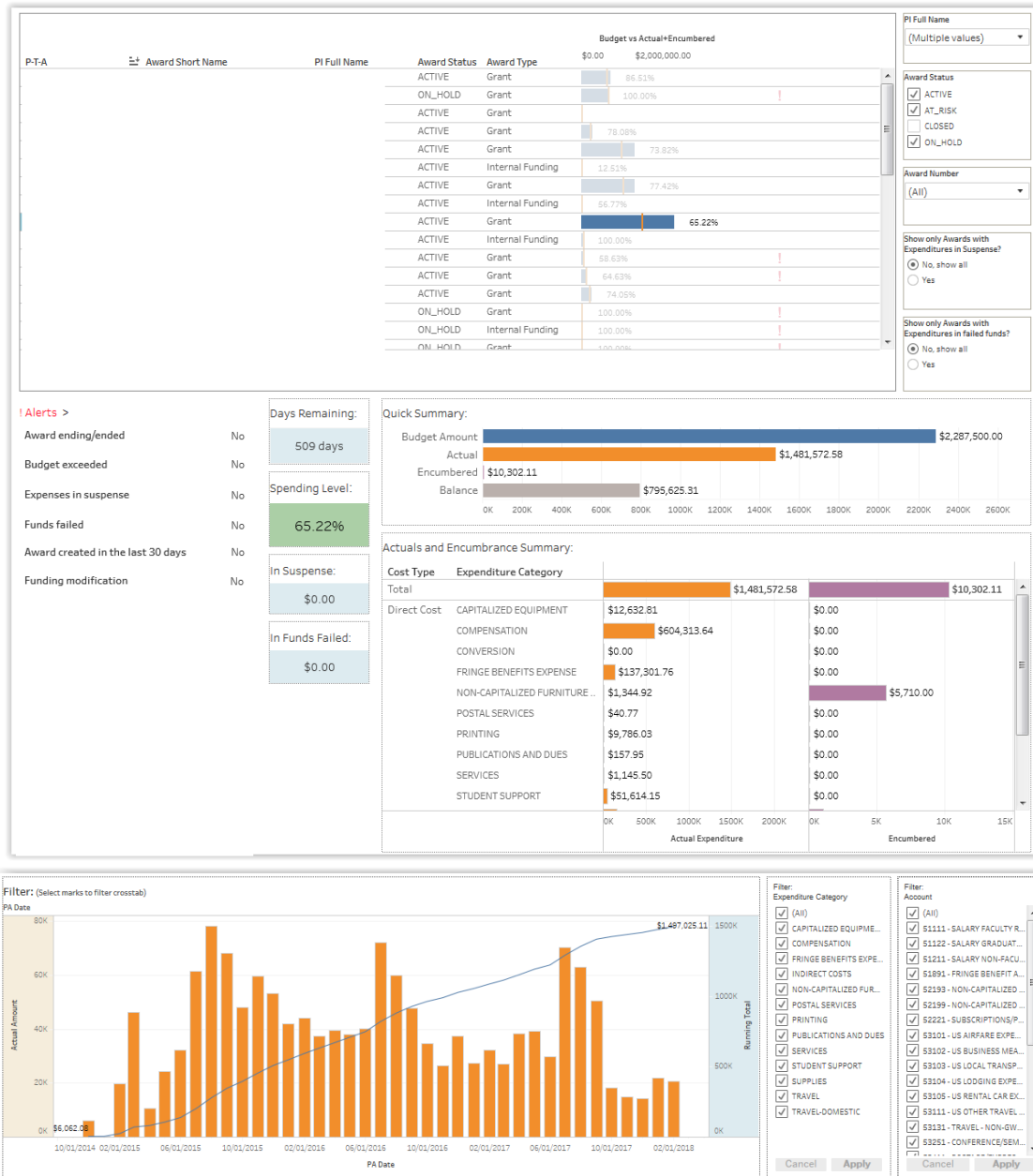
**Availability:**

- The BETA versions are available to a select group of users from the different schools across the University.





- **Award Management Dashboard [BETA]** – Developed as an extension of the PI Dashboard, this dashboard will allow Principal Investigators and support staff to monitor award budgets, actuals and encumbrances visually and interactively.



Sample screen shot (sensitive information removed)

**Availability:**

- The BETA version is available to a select group of users in the Office of the Vice President of Research.





---

## **Business Intelligence Services (BIS) Strategic Initiatives (continued)**

### **Tableau Upgrade:**

- To avail of the latest features, Tableau Server has been upgraded from version 10.4 to 10.5.
- Desktop users with current licenses are advised to upgrade to [version 10.5](#) especially if the workbook will be published on the server.
- To find out what's new in Tableau 10.5, please visit Tableau's [website](#). Among the improvements to 10.5 include Hyper, Tableau's new data engine which improves analytical and query performance.

